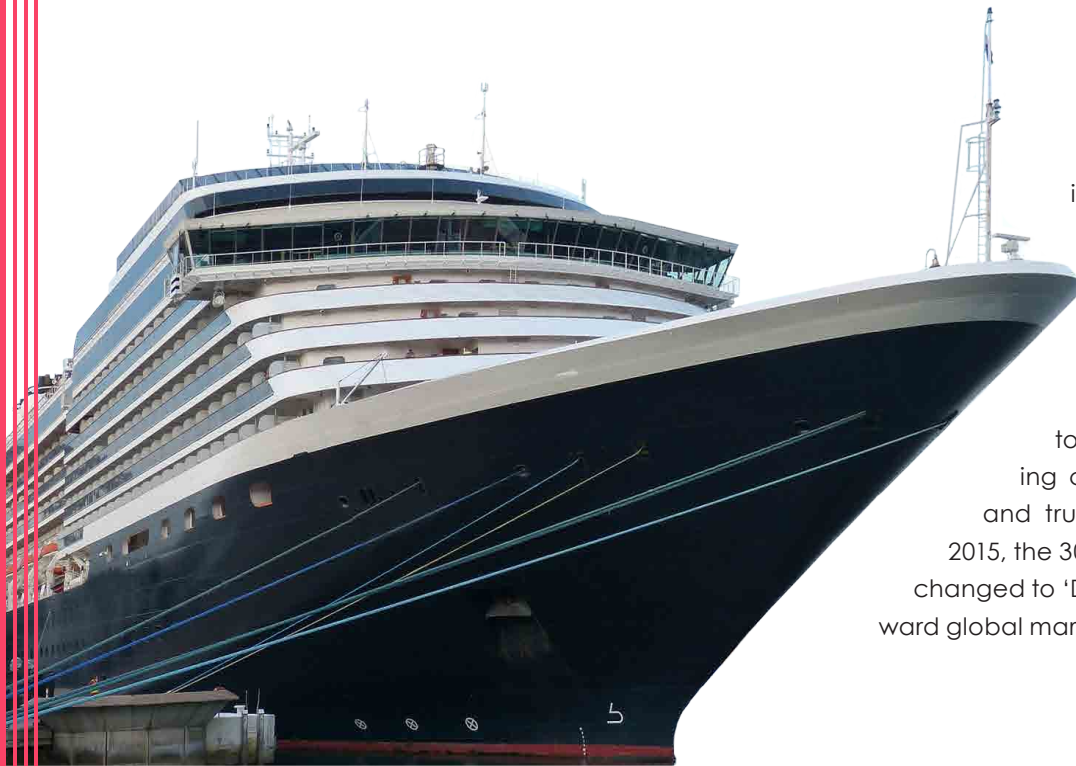


Passion for Customer Beyond the Best !

GENERAL INFORMATION

*“ Global Total Service Provider for Marine,
Industrial and Ship Management Markets ”*



DINTEC was incorporated on Feb 18th, 1985 in Korea with the name of "Dongjin Ship Management Co., Ltd." providing high quality ship management service and spare parts of HHI marine diesel engines to worldwide customers.

In 1994, we changed the company name to "Dongjin Intec Co., Ltd" and grew as a leading company in the industry based on a strong and trustworthy relationship with our customers. In 2015, the 30th anniversary year, the company name was changed to 'DINTEC Co., Ltd' and we make a new leap forward global markets.

INTRODUCTION



Feb. 1985

ESTABLISHED



150

EMPLOYEES



USD 110M

TURNOVER



BUSAN, KOREA

HEAD OFFICE



KOREA
SINGAPORE
SHANGHAI
DUBAI

NETWORK

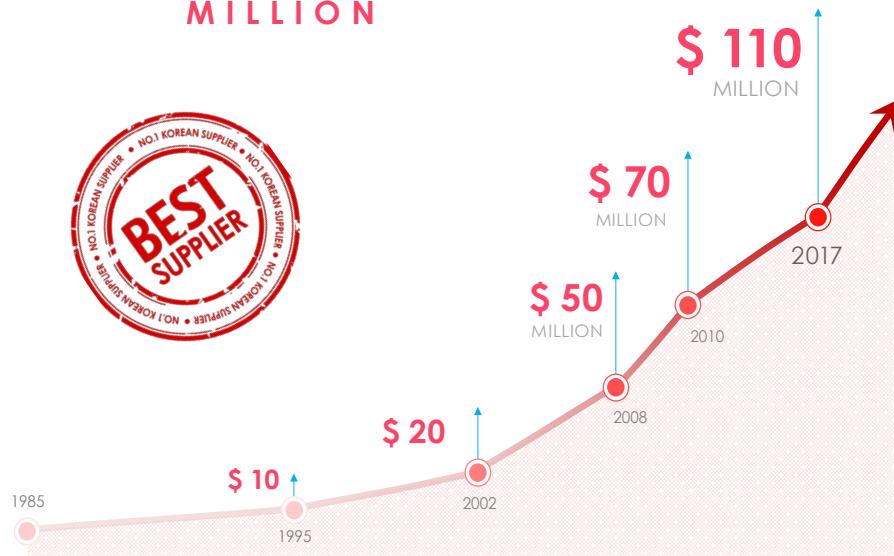
As an authorized sales agency of Hyundai Heavy Industries and other Korean machinery makers, DINTEC pursues a customer-oriented service by supplying original makers' products. Furthermore, we provide a differentiated service in various business including a supply for offshore project, ship stores, technical and engineering etc. In addition, with our 30 years of professionalism in ship management services, we realize maximum of operational efficiency.

COMPANY HISTORY

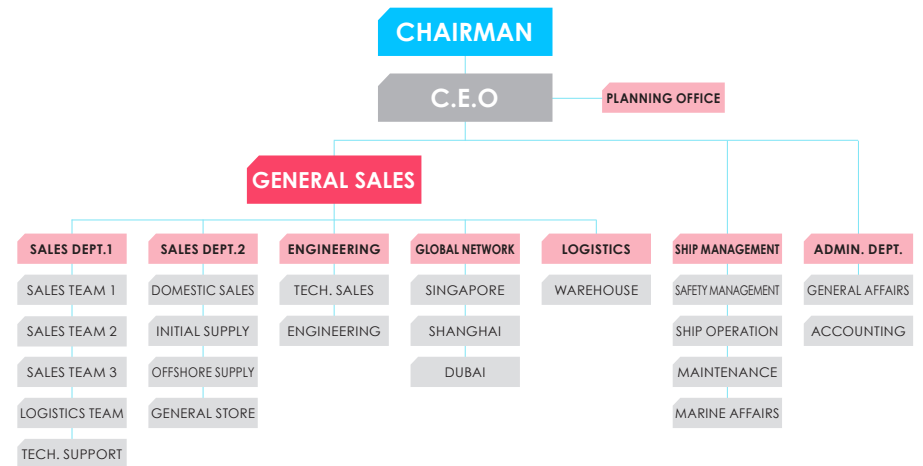
- 2017 **EXPAND SHIP MANAGEMENT SERVICE**
 - Expand fleet up to 13 vessels (Total operation)
- 2015 **FORWARD TO TOMORROW**
 - Company's 30th anniversary
 - Changed company name to **"DINTEC"**
 - Achieved over **100 million dollar** of the turnover in 2015
- 2014 **ESTABLISHED GLOBAL OFFICE**
 - Establishment of global office in Singapore
 - Establishment of global office in Dubai, U.A.E.
- 2011 **IMPROVEMENT**
 - Become a member of IMPA & ISSA
- 2005 **INTERNAL & GLOBAL GROWTH**
 - Completion of Logistic and Warehouse Center about 3,000 m²
 - Establishment of global office in Shanghai, China
- 2002 **SET UP A STORE BUSINESS**
 - Started up a store sales business
- 2001 **ESTABLISHED GLOBAL OFFICE**
 - Establishment of global office in Rotterdam, Netherlands
- 1994 **CHANGE & AWARDED**
 - Changed company name to "Dongjin Intec Co., Ltd"
 - Awarded the exemplary tax payment from the Director of National Tax Administration Office
- 1991 **BUSINESS EXTENSION**
 - Assigned as "Korea Ship's Total A/S Center" by five major shipyards in Korea Contract with 25 foreign makers for an exclusive sales agent of the products.
- 1988 **STARTED AN ENTERPRISE**
 - Contract with **"Hyundai Heavy Industries Co., Ltd"** for **an athesized sales agent of spare parts** of marine diesel engine.
- 1985 **ESTABLISHED**
 - Establishment of "Dongjin Ship management Co., Ltd"

ANNUAL SALES AMOUNT

OVER USD **110** MILLION ANNUAL SALES AMOUNT



ORGANIZATION

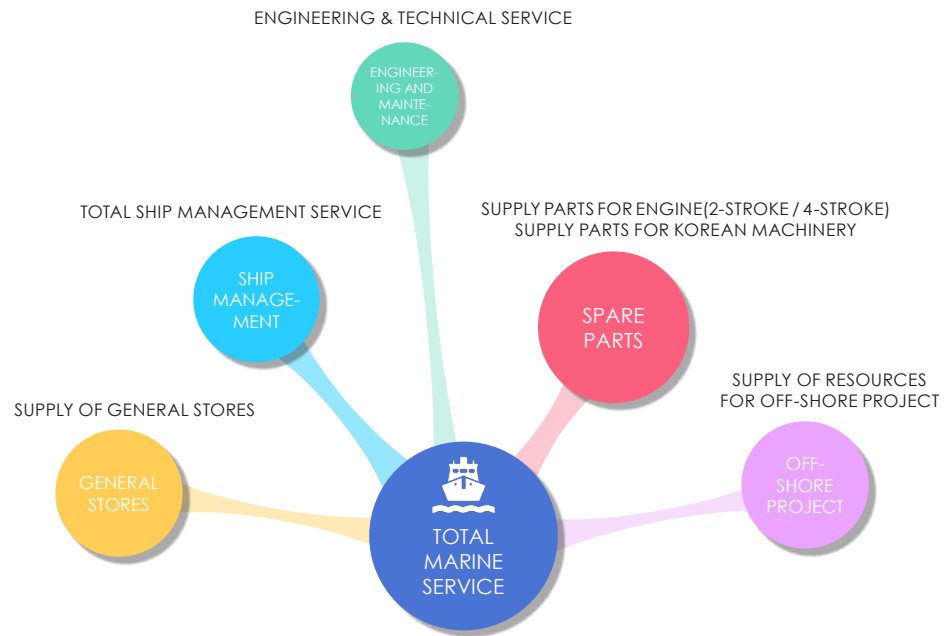


* SALES DEPT.1 : DEPARTMENT FOR SPARE SALES

* SALES DEPT.2 : DEPARTMENT FOR STORE SALES AND OFF-SHORE PROJECT



BUSINESS SCOPE



OVER **25** YEARS KNOW-HOW OF
ENGINE AND KOREAN MACHINERY
SPARE PARTS SALES SERVICE



OVER **30** YEARS KNOW-HOW OF
SHIP MANAGEMENT SERVICE

Through Sharing of Customer's Needs



“ **DEVELOPMENT OF BEST SERVICE
FOR OUR CUSTOMER** ”

TOTAL MARINE SER

SPARE SALES

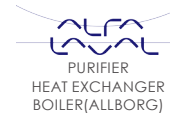
AGENT OF HYUNDAI ENGINE



DINTEC made a contract with EMD of HHI (Engine and Machinery division of Hyundai Heavy industries) in Dec 1988. Since then, as the largest and authorized agent of HHI, we have provided high quality of genuine spare parts for Main Diesel Engine and Generator Engine in a time manner.



AGENT OF MAJOR MACHINERY COMPANY

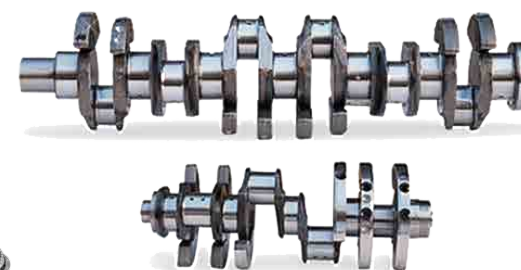


VICE

DEALER OF OTHER MACHINERY COMPANY

- ARIM MACHINERY & ENGINEERING
- BLOHM + VOSS
- BN COSMO
- BY CONTROLS (BUYOUNG CO LTD.)
- CEPHAS PIPLINES CORP.
- DAEYANG ELECTRIC & INSTRUMENT CO., LTD.
- DAEHWA ENGINEERING SENSOR
- DHP ENGINEERING CO
- DONGWOO MACHNERY & ENGINEERING
- DONG-A VALVE
- DOOSAN INFRACORE
- DSB ENGINEERING
- EMERSON PROCESS MANAGEMENT
- FLUTEK
- HANLA IMS
- HIFLY VALVE
- HYDAC KOREA
- HYUNDAI LIFEBOAT
- HYUNDAI ELEVATOR

- JETS KOREA
- JOKWANG I.L.I. (EX.JOKWANG VALVE)
- JONGHAP MACHINERY
- JOWA KOREA
- JUNG GONG IND. CO.
- JUNG-A MARINE CO.
- K.C.LTD.
- KANGRIM INDUSTRIES CO., LTD.
- KEUMSUNG PRECISION CO.
- KIWON INDUSTRIES CO.
- KOMECO (KUM-OH MACHINERY CO.)
- KOREA KAWAMURA CO.
- KOREA MARINE TECHNOLOGY (KMTC)
- KOREA U.V. TECH
- KPHE CORPORATION
- KTE CO., LTD.
- KWANGSAN CO., LTD.
- KYUNGNAM DRYER CO.
- MARINE RADIO CO., LTD.
- MT.H CONTROL VALVES (HANLA AUTOMATIC)

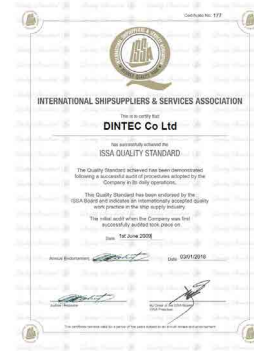


DINTEC contracted with major machinery manufacturers in Korea and foreign countries. As an official agent/dealer, we handle only genuine spares at a reasonable price and prompt delivery conditions.

*** To identify additional machinery maker's information, visit our web site. (www.dintec.co.kr)**

GENERAL STORES

DINTEC responds to customer requirements in general ship stores, sustaining and improving quality of life for those living onboard. We provide one-stop services based on innovative logistics system (Identification through QR code, Container delivery, etc.) so our customers can save their time and efforts. We specialize in supply of initial stores for newly built vessel in Korean shipyard and in-operation vessels as well.



STORE CATEGORIES

- CABIN & GALLEY STORES
- MARINE PAINT & PAINT EQUIPMENT
- DECK & ENGINE STORES
- MARINE OIL & CHEMICALS
- CHARTS & PUBLICATIONS
- PIPE & FITTINGS, VALVES, SCREWS, NUTS
- PROVISIONS & BONDED STORES
- MEDICAL EQUIPMENT
- SAFETY EQUIPMENT
- STATIONERY



ENGINEERING & MAINTENANCE

DINTEC provides customized technical and engineering services in various fields such as commissioning, repairs and A/S. With our skillful engineers (who majored in marine automatic control, electronic & electrical engineering, computer system control, among others), we provide an exclusive and reliable engineering services maintaining the highest level of quality.

azbil

Yamatake Corporation

I.A.S (INTEGRATED AUTOMATION SYSTEM)
A.M.S (ALARM MONITORING SYSTEM)
FEED WATER P/P PRESSURE CONTROL SYSTEM
FIELD INSTRUMENTS CONTROL V/V

FUKUI

SAFETY VALVE
CARGO AND I.S. / I.B.S TANK
CARGO PIPE LINE & BOILER



W.H.R.S. (WASTE HEAT RECOVERY SYSTEM)
I.A.S (INTEGRATED AUTOMATION SYSTEM)
SHIP MANagements SYS. BOILER SYSTEM.
GAS FLOW METER SYSTEM
MAIN TURBINE REMOTE CONTROL SYSTEM

M-SYSTEM

LPG CARGO PUMP
MFW CONTROLLER
AUTOMATIC CONTROL SYSTEM



GAS DETECTION SYSTEM
(FIX & PORTABLE)

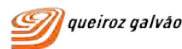


OFF-SHORE PROJECT

DINTEC provides One-Stop Service of procurement & local manpower for offshore projects in South Korea. With many years of experience and expertise, we can offer the project coordination such as procurement, spare parts and manpower for each project stages (Initial, Construction, Commissioning

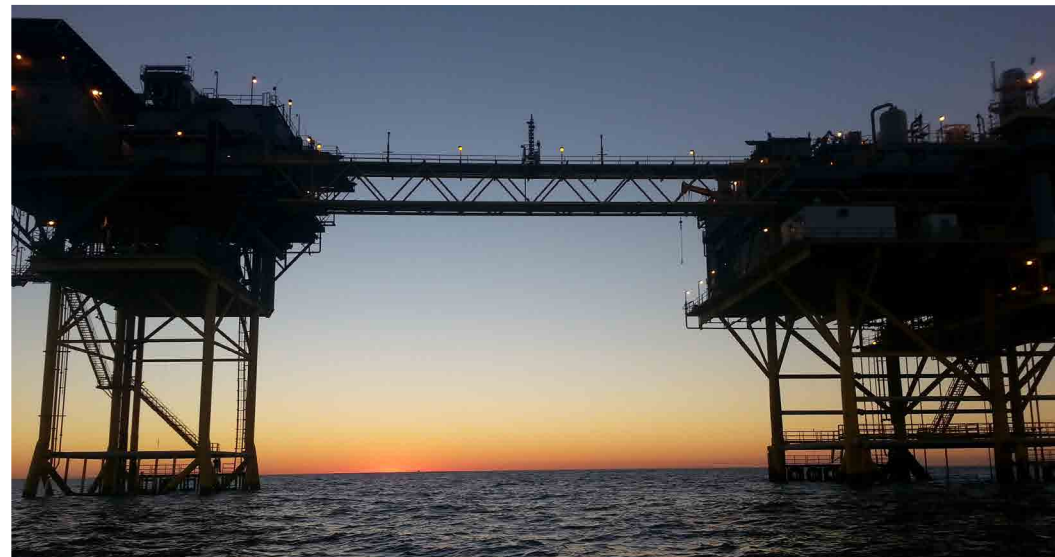
and after delivery stage) that is allowing us to give customer the best service possible. As your good partner, we try to support for the successful procurement in obtaining your overall goals.

DEALER OF OTHER MACHINERY COMPANY



SUPPLY ITEMS

- SAFETY EQUIPMENT & PERSONAL PROTECTIVE EQUIPMENT
- CABLES & ELECTRICALS
- TOOLS (COMMISSIONING, INSPECTION)
- PIPING & STEELS, VALVES & FITTINGS
- SPARE PARTS (TOP & HULL SIDE MACHINERY)
- LUBRICANTS & CHEMICAL
- OFFSHORE CONTAINERS (DNV2.7-1)
- LIFTING GEARS
- GENERAL CONSUMABLES
- MANPOWER (DESIGN, COMMISSIONING)



SHIP MANAGEMENT

This service will assist your vessel to achieve successful optimum operation through our economical management with 30 years of experience, our special Ship Management System will provide our customers with unique service to meet their expectation.

Our service gives customers the ultimate in satisfaction with low cost, high quality and efficient service. We have provided customers with most effective Total Ship Management Service not only crew & technical management but also ship operation and marine insurance management.

This special service focus on risk management and contribute to minimize risk and cost for our customers of international shipping industry through bearing the burden of great risk on ship's operation and management for ship's owners.

VESSEL LIST

TYPE OF MANAGEMENT	SHIP TYPE	SHIP NAME	FLAG	BUILT	GRT(MT)
ALL RISK TAKING LUMP SUM TOTAL SHIP MANAGEMENT	BULK CARRIER	PACIFIC KOREA	PANAMA	2012	33,057
		PACIFIC CROWN	PANAMA	2012	33,057
ACTUAL TOTAL SHIP MANAGEMENT	BULK CARRIER	HL TACOMA	KOREA	1994	37,550
		HL ROBERTS BANK	KOREA	1994	73,706
		POS HARVESTER	KOREA	1992	75,277
		POS DEDICATOR	KOREA	1993	110,627
		INNOVATOR	KOREA	1992	75,277
		KEOYANG ORIENT	KOREA	1997	75,752
	PASSENGER SHIP	HYUNDAI POWER	KOREA	1998	76,068
		BIRYONG	PANAMA	1996	14,700
MANNING SHIP MANAGEMENT	CAR CARRIER	FUJITRANS WORLD	LIBERIA	2000	27,286
		TRANS FUTURE 2	PANAMA	1998	25,667
		DELPHINUS	PANAMA	1991	17,752



13 VESSELS
UNDER OUR MANAGEMENT

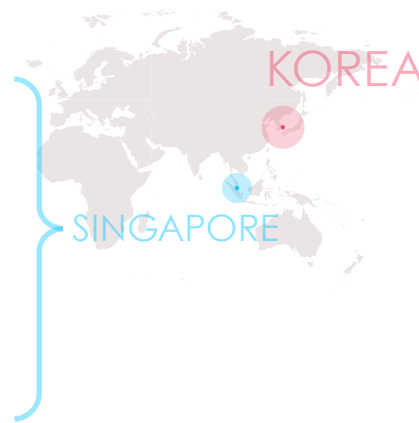
TOTAL MARINE
SERVICE



LOGISTIC SERVICE

SINGAPORE

-  **LOCATION** 7, SOON LEE STREET,
#02-43/44, I-SPACE,
SINGAPORE
-  **STOCK ITEMS** STOCK FOR HYUNDAI
HIMSEN ENGINE SPARES
-  **STOCK AMOUNT** USD 0.3M



KOREA

-  **LOCATION** YANGSAN, KOREA
-  **EMPLOYEES** 25 STAFFS
-  **TOTAL AREA** 3,000 m²
-  **STOCK AMOUNT** USD 8.0M (to be 10.0M)
-  **STOCK ITEMS** STOCK FOR DIESEL
ENGINE SPARES



LOGISTIC PROCESS



TRANSPORT



INSPECTION



STORING IN



STOCK OUT



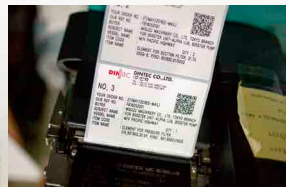
SHIPMENT SEALED



TRANSPORT



INSPECTION



QR CODE LABELING

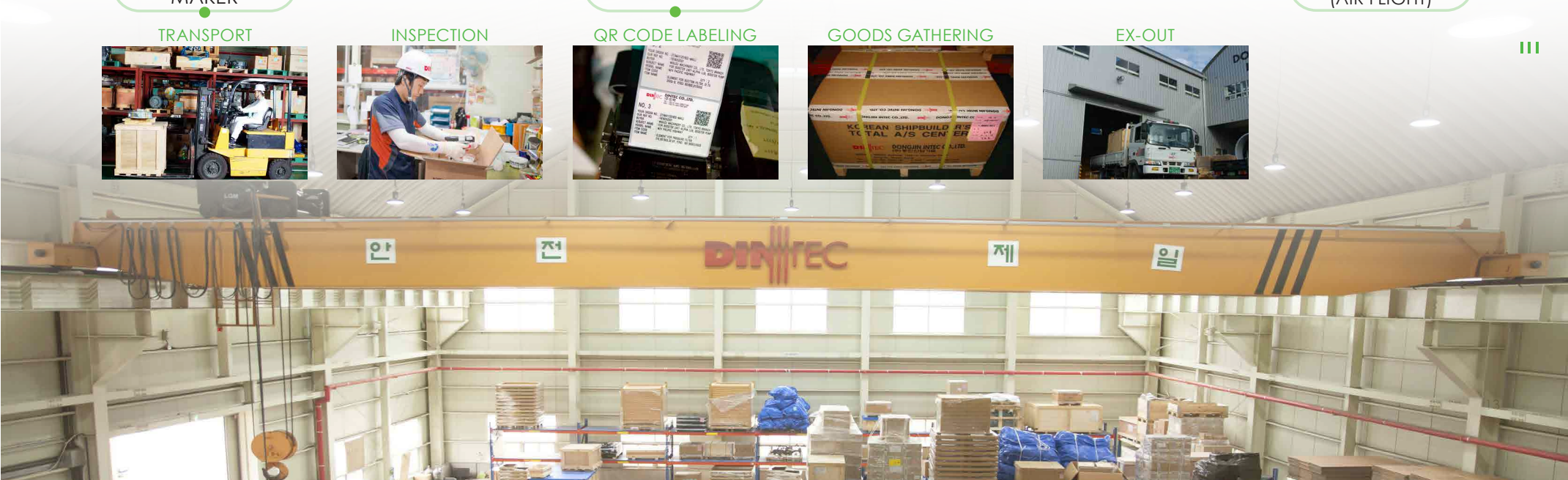


GOODS GATHERING



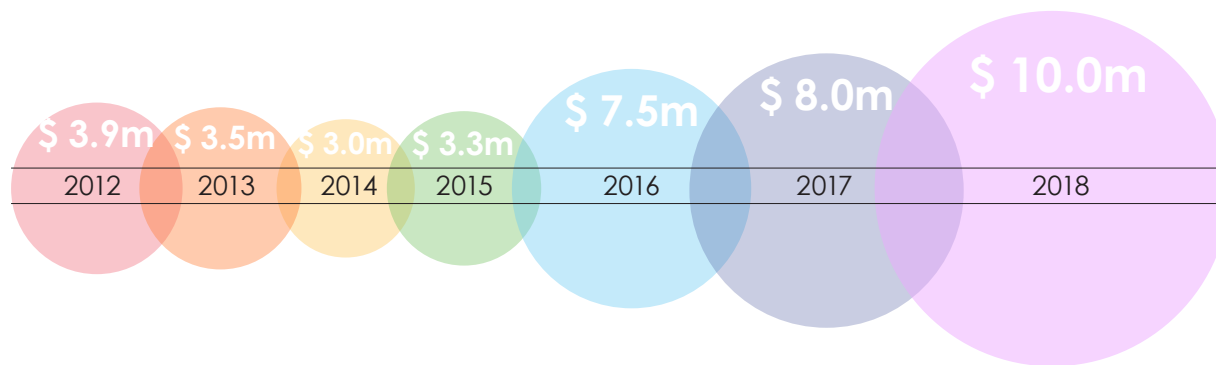
EX-OUT

LOGISTIC SERVICES

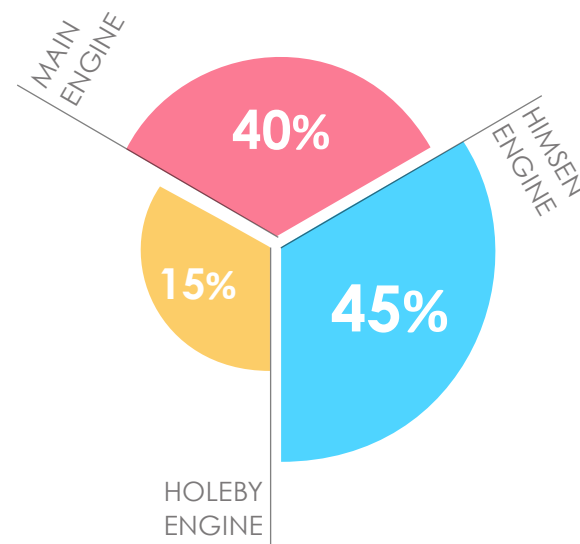




ANNUAL STOCK PURCHASING AMOUNT



HOLDING AMOUNT OF ENGINE SPARE



KOREA WAREHOUSE (\$10.0m)

MAIN ENGINE

MAN B&W L/S 50, 60, 70,
L/S/K 80, 90, 98MC/ME

HOLEBY ENGINE

HOLEBY B&W L23/30(H),
L27/38, L28/32(H)

HIMSEN ENGINE

H17/28, H21/32, H25/33, H32/40

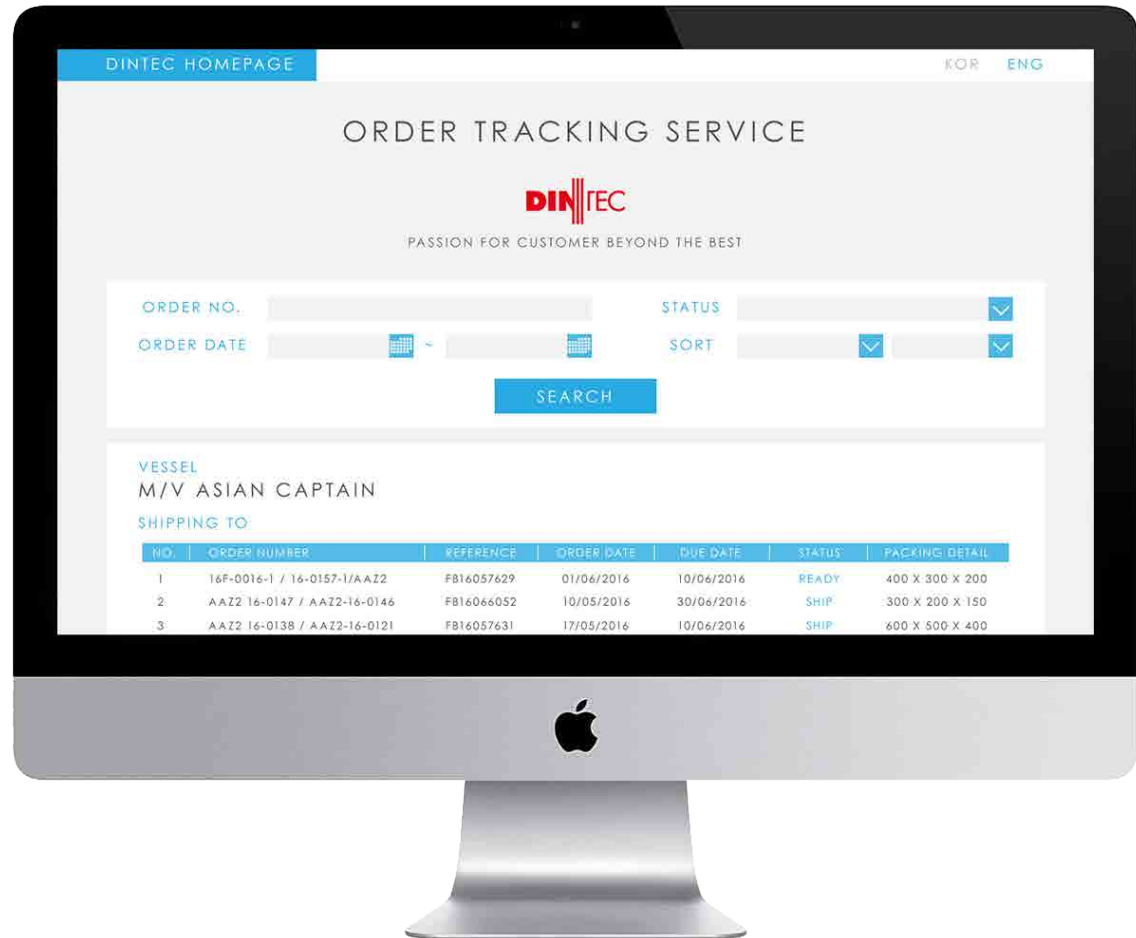
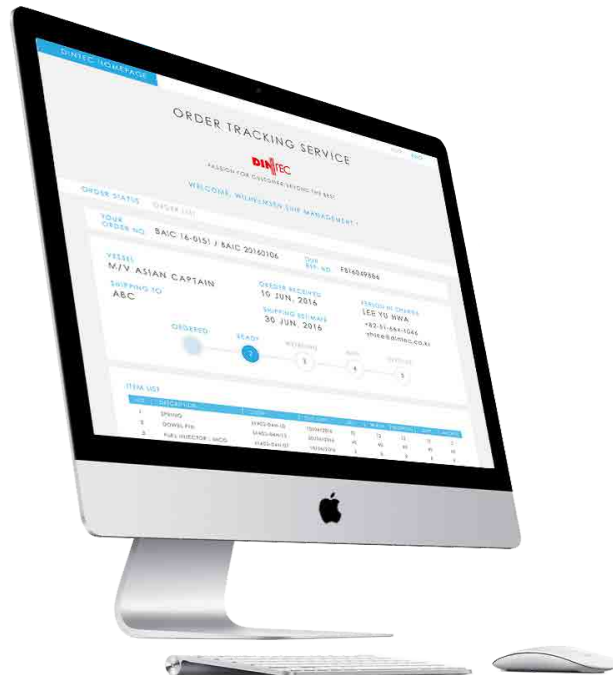
SINGAPORE WAREHOUSE (\$0.3m)

HIMSEN ENGINE

H21/32

REAL-TIME ORDER STATUS SERVICE

DINTEC provides our customer with Order Tracking service via web site (tracking.dintec.co.kr). With customer's order number and our reference number, customers are able to log in our web site and check order status and packing detail in real time. The order tracking service helps our customer plan delivery schedule.



“ OUR CUSTOMERS ARE ABLE TO CHECK ORDER STATUS IN REAL TIME VIA DINTEC TRACKING SERVICE ”

GLOBAL NETWORK

The next growth engine of DINTEC is a globalization. We'll bring our customers to an immediate and satisfactory services based on DINTEC's global network in Singapore, Shanghai and Dubai, etc.

“ *Worldwide Network Service
for Satisfaction of Global Customer* ”



1 HEADQUATER



2 WAREHOUSES



3 GLOBAL OFFICES



3 AGENTS



GLOBAL OFFICE

DUBAI, U.A.E.

Office no. 28-I, Silver Tower,
Cluster I, JLT, P.O Box 112824
Tel. : +971-(0)4-244-0340
Mobile : +971-(0)52-864-4674
E-mail : gdchoi@dintec.co.kr

GLOBAL OFFICE

SHANGHAI, CHINA

19/F, Flat D, AiHe Building,
629 LingLing Road
Tel. : +86-21-3424-0518
Fax : +86-21-6427-4270
E-mail : business@highway-marine.com

HEADQUARTER

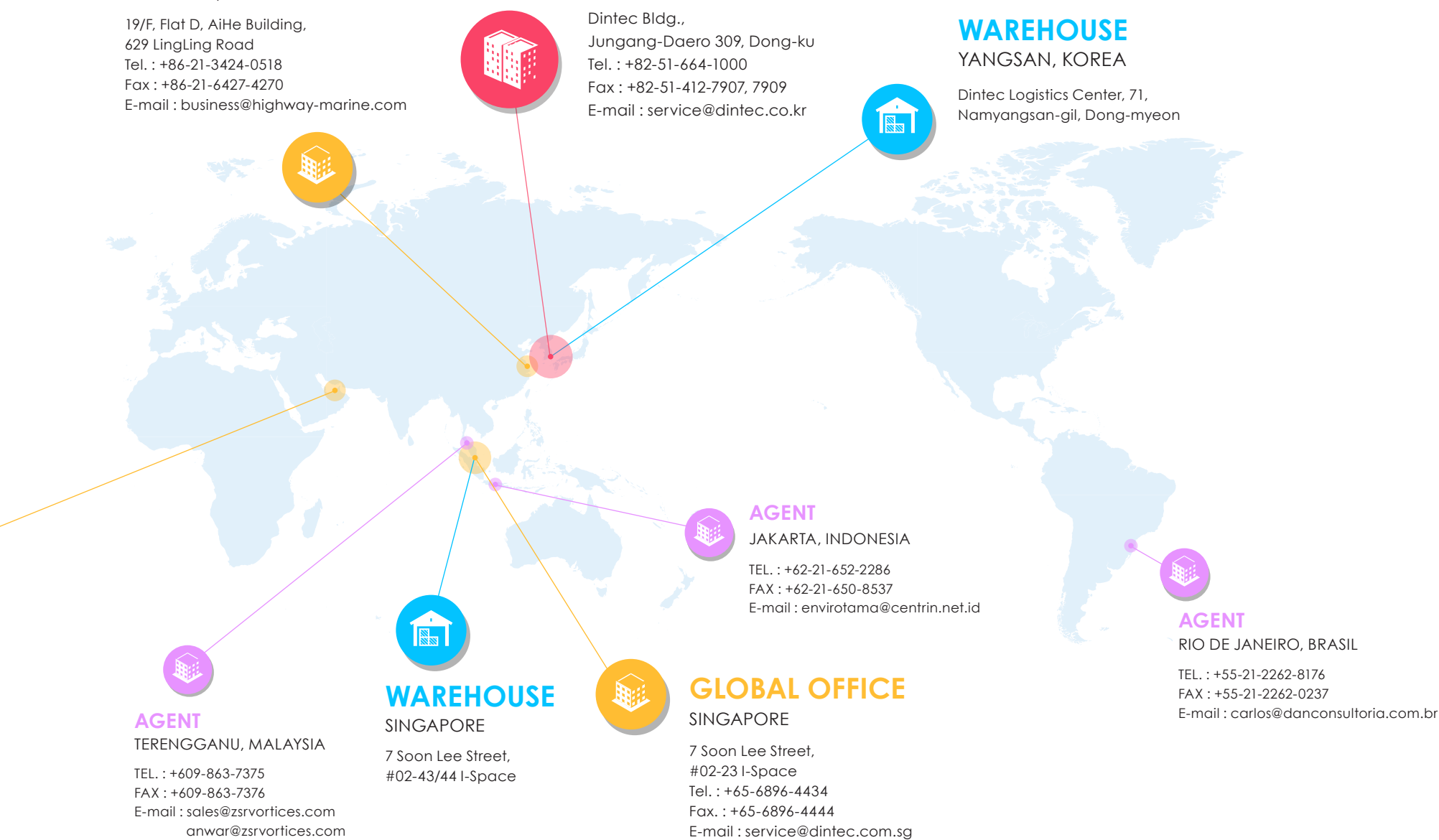
BUSAN, KOREA

Dintec Bldg.,
Jungang-Daero 309, Dong-ku
Tel. : +82-51-664-1000
Fax : +82-51-412-7907, 7909
E-mail : service@dintec.co.kr

WAREHOUSE

YANGSAN, KOREA

Dintec Logistics Center, 71,
Namyangsan-gil, Dong-myeon





DINTEC CO.,LTD.

Dintec Building,
Jungang-Daero 309, Dong-ku, Busan, Korea
Tel. : +82-51-664-1000
Fax : +82-51-462-7907~9
e-mail ; service@dintec.co.kr
Web : www.dintec.co.kr

